



HITHERTOP



HiMaTEK



WHO WE ARE

We are a professional supplier, engaged in casting, forging, and standard products made by metal processing.

We achieve quick development from satisfied deliveries and competitive prices.

From 2000, we have been cooperating with a group of cost-effective workshops in Asia. Our Chinese office is located in Beijing, and German trading company is located in Düsseldorf.

We always supply the right materials, just as customer's requirement. We design the proper processing for each project. And our partners are equipped with advancement. Following list are the most options of processing.

- Clay/Resin/Water-glass/Baking Sand casting, made by hand/machine molding
- Lost-wax Investment Casting; Vacuum melting & pouring is also available.
- Lost-foam Casting;
- Gravity/Low-pressure/High-pressure Die Casting
- Open/Close die forging, Cold extrusion;
- Manual & CNC Machining
- Heat-treatment;
- Surfacing Treatment





CAD/CAM is generally used to design and manufacture mould & die, and products. CAE is introduced to simulate solidification processing. For quick sample, we also adopt rapid prototyping.

Quality Management

Our own project-control, documentation, and partners' production-process, are executed in accordance with requirement of ISO9001 and EN10204.

General Testing

- Chemical Composition (Chemical Lab and Spectrometer)
- Mechanical Properties (Tensile, Charpy, Hardness)
- Microstructure
- Dimension (Gauge, Scale, projector, CMM)
- Soundness (Ultrasonic, X-ray, Magnetic Powder, Liquid penetration)
- Corrosion Resisting
- Pressure Testing

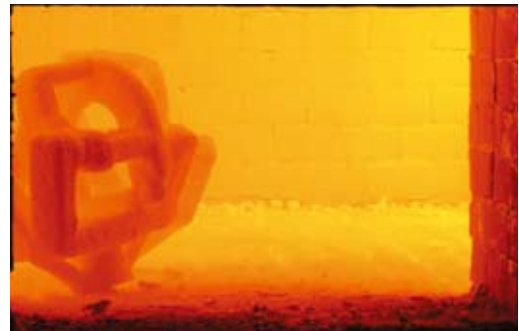




LOST-WAX INVESTMENT CASTING

Key Features

- Capable of complicated shape and small features
- High Precision and good surface
- Few limits to casting alloys
- Flexible manufacturing
- Lower cost



Capacity

Weight	Size	Thickness	Sharpness	Roughness
2g~30kg	≅ 500mm	≅ 1.2mm	R0.1	Non-Ferrous, Ra0.8~1.6μm Ferrous, Ra1.6~3.2μm

linear Tolerance

ISO 8062, CT 4~6 for general, and CT3 for special requirement.

Hole Tolerance

Dia.(mm)	12.5	25	38	50	64	125	200	250	400
Tolerance(mm)	±0.10	±0.15	±0.20	±0.25	±0.30	±0.50	±0.8	±1.2	±1.5

Shape Tolerance

Angle	±30°	Flatness	0.5%
-------	------	----------	------

Pouring Alloy

Stainless Steel (SS)	Ferrite SS, Austenite SS, Martensite SS, Duplex SS, Deposition hardening SS
Other Steel	Carbon, Low-alloy, Tool, Heat-resistant, Hi-Manganese Steel
Non-ferrous	Aluminum alloy, Bronze, Brass
Super Alloy	Nickel-based alloy, Cobalt-based alloy

LOST-FOAM CASTING



Key Features

- Capable of complicated shape and small features
- Higher Precision and better surface than sand casting
- Few limits to casting alloys
- Flexible manufacturing
- Lower Cost Solution



Capacity

Weight	Size	Thickness	Sharpness	Roughness
5~3000kg	≅2000mm	≅4mm	R1	Non-Ferrous, Ra3.2~6.3μm Ferrous, Ra6.3~12.5μm

linear Tolerance

ISO 8062, CT 7~9 for general, and CT6 for special requirement.

Cast Hole Tolerance

Dia.(mm)	12.5	25	38	50	64	125	200	250	400	600	800
Tolerance(mm)	±0.15	±0.20	±0.25	±0.40	±0.50	±0.80	±1.2	±1.5	±2.0	±3.0	±4.0

Shape Tolerance

Angle	±1°	Flatness	1.2%
-------	-----	----------	------

Casting Alloy

Cast Iron	Grey Iron, Ductile Iron, High-Nickel Ductile Iron, Chrome Iron
Cast Steel	Carbon Steel, Tool Steel, Hi-Mn Steel, Heat-resistant Steel
Non-ferrous	Aluminum alloy, Bronze, Brass





SAND CASTING



Our Sand Casting include Green/Water-glass/Sand, hand-molding/machine molding. For details, please read the following chart.

Processing	Weight	Size	Thickness	Sharpness	Pouring Alloy	Tolerance	Roughness	Suitable Lot
Clay Sand Casting (Floor and Machine Molding)	15g~10kg	≦200mm	≧2mm	R1.5	Grey/Ductile/Malleable/White Iron; Aluminum alloy; Brass & Bronze	ISO 8062, CT11~13	Non-ferrous, Ra6.3~12.5μm; Ferrous, Ra12.5~25μm	Big
Resin Sand Casting	5kg~5000kg	≦3000mm	≧5mm	R3	Grey/Ductile/Malleable/White Iron; Chrome Iron/Nickel Iron; Aluminum alloy; Brass & Bronze	ISO 8062, CT10~12	Non-ferrous, Ra6.3~12.5μm; Ferrous, Ra12.5~25μm	Small to Moderate
Water-glass Sand Casting	5kg~8000kg	≦3000mm	≧5mm	R3	Chrome/Nickel Iron; Carbon/Low-alloy/Hi-Mn/Stainless Steel	ISO 8062, CT11~13	Ra12.5~25μm	Small to Moderate



DIE CASTING

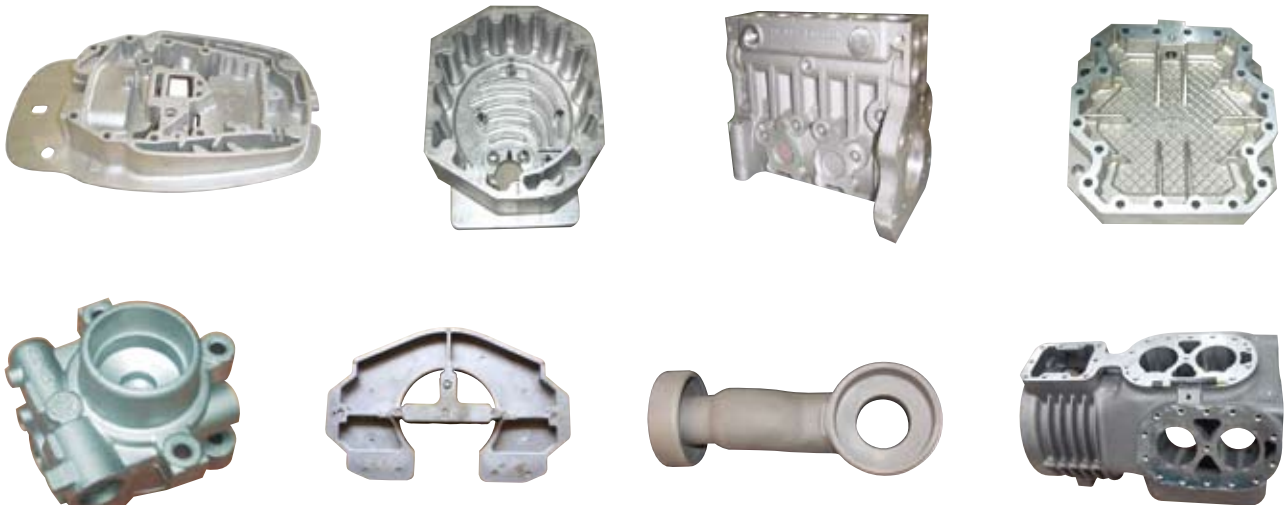


Including Gravity, Low-pressure, and High-pressure

High Pressure, Low Pressure, and Gravity Die Casting to pour Aluminum alloy. For the sake of effective tooling investment, moderate to big lot is generally preferable.

Size: Max 500 mm in length.

Weight: Max 5 kg for high pressure die casting, Max 25 kg for low pressure and gravity die casting.





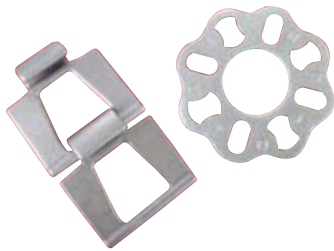
FORGING

Including Open-die, Close-die, and Cold-extrusion

According to EN10243, we supply open die forging, close die-forging, and cold extrusion. Material could be carbon steel, low-alloy steel, stainless steel, and brass.

Size: Max 600 mm in length.

Weight: Max 50 kg for close die forging, Max 800 kg for open die forging.



MACHINING & HEAT TREATMENT & SURFACE TREATMENT



Machining

Thread screwing, Drilling, (Vertical) Turning, Milling, Grinding are available, both of manual and CNC. Lot of small to big size is acceptable.

Size: Max 1500 mm in length, and Max 2500 mm in Diameter.

Heat Treatment

To improve performance, we supply the following with advanced equipment and experienced operation.

Annealing, Normalizing, Air/Oil/Water Quenching, Tempering, Solid Solution, Vacuum Hardening, Case Hardening, Nitriding, Hipping (with high pressure), etc.

Surface Treatment

To improve corrosion resistance or surface finishing, we supply the following with advanced equipment and experienced operation.

Passivating, Electro-polishing, Machine Polishing, Chrome Plating, (Color) Zinc Plating, Anodizing, Galvanizing, Nickel Plating, Powder Coating, Phosphating, Common Painting, etc.





STANDARD PARTS FOR PIPELINE INDUSTRY

**Water Pipe, Soil Pipe,
Pipe Fittings of different mode and in different materials, especially**

Ductile Iron Pipe Fitting

- Material: Ductile iron, 65-45-10
- Standards: ISO2531:1998, EN545:2002, AS/AZS 2280
- Size: DN80~DN600
- Surface: Bitumen & Cement Lining, Powder Coating



Thread Pipe Fitting

in Stainless Steel 304/316, and Malleable Iron, size 1/4"~6"

Valve

Ball Valve, Check Valve, and Gate Valve in Cast iron, Carbon Steel, and Stainless Steel, 304/316/Duplex.

Coupling

QUICK COUPLING , in stainless steel, 304/316



SHIPPING AND LOGISTIC



To us, delivery means more than transportation. We set emphasis to on-schedule delivery and low cost.

We select international carrier with intelligence, so to guarantee the best solution. We also supply Just-In-Time service, by keeping storage close to or at customer's site. For general trial production, our reference lead-time is 5 weeks.



Hithertop International Co., Ltd.

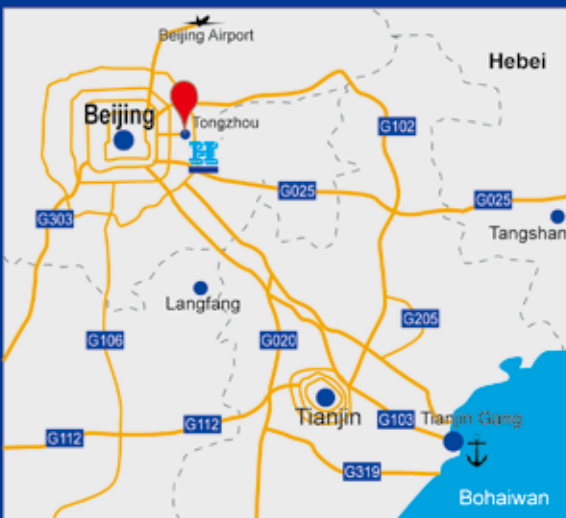
Add: Yiruxili, Liyuan, Tongzhou, Beijing, 101121

Tel: +86 (0) 10 8081 9014

Fax: + 86 (0) 10 8081 9034

Email: postmaster@hithertop.net

Website: www.hithertop.net



HiMaTEK GmbH

Add: Hüttenstr. 54, 40215, Düsseldorf

Tel: +49 (0) 211 5441 5719

Email: info@himatek-guss.de

Website: www.himatek-guss.de

